

### **Direct Driven Centrifugal Type - RDC Series**

Fan is designed for roof mounting. It has compact dimensions and a discreet appearance. It is characterized by quiet and at the same time effective operation. It is possible to install it with an extractor to the existing ventilation system or outside the building.

**Size** from 150 to 315 mm

**Capacities** to 2,200 m<sup>3</sup>/h

**Total pressure** up to 800 Pa

Low noise level and easy installation

Motors protected to IP44

Motor insulation Class 'B'

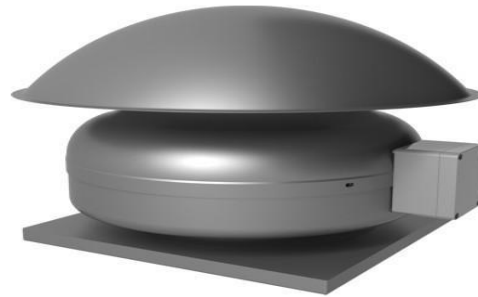
Maximum operating temperature 60°C

Standard Thermal Overload Protection

IP65 service isolator

Bird guard included as standard

Speed controllable



### **Application**

Roof fans exhaust RDC are designed for ventilation systems of industrial premises. They are used in exhaust systems of industrial halls, workshops, warehouses, garages, parking lots and others.

### **Construction**

All RDC series fan casing is manufactured from corrosion resistant pressed galvanized sheet steel. Non-stalling backward curved impeller which is factory matched to the corresponding external rotor motor and dynamically balanced to ISO 1940 standards for vibration free operation. All models are supplied as standard with a remotely mounted wiring junction box to

provide the installer with a completely flexible choice for positioning and installation.

**Operating temperature** - 20°C to +60 C.

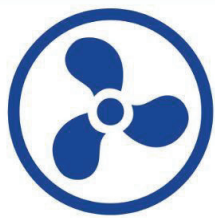
### **Motor**

Motors of this RDC series are fully speed controllable using electronic or autotransformer voltage control regulators. Enclosed, single phase, 230V, 50/60 Hz external rotor type, motors included sealed for life ball bearing assemblies and Class F, IP44 protection with an internal automatic reset safety thermal overload protection device as standard.

### **Accessories**

Roof Stand, Connector, Backdraft shutter, Flexible duct, Flexible connector, Speed controller, Service switch.



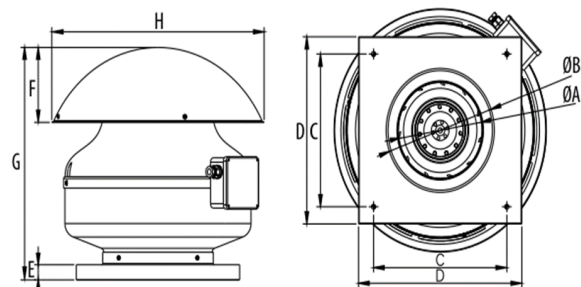


Model	Capacity max. (m <sup>3</sup> /h)	100 Pa m <sup>3</sup> /h	150 Pa m <sup>3</sup> /h	250 Pa m <sup>3</sup> /h	400 Pa m <sup>3</sup> /h	Pressure max. (Pa stat.)	Motor (W)	In max. (A)
RDC 150	600	475	400	225	-	310	70	0,27
RDC 200	1400	1000	880	600	100	465	170	0,52
RDC 250	1800	1600	1300	1000	500	590	210	0,7
RDC 315	2200	2100	1900	1500	1250	700	250	0.7

Technical Data								
Model	Voltage (V)	FREQUENCY (Hz)	POWER (W)	REVOLUTION (rpm)	FLOW (m <sup>3</sup> /h)	dB (A) at 3 m	Motor Protection	Insulation Class
RDC II 150	230	50/60	66	2650	600	61	IP44	F
RDC II 200	230	50/60	170	2712	1400	72	IP44	F
RDC II 250	230	50/60	210	2420	1800	73	IP44	F
RDC II 315	230	50/60	250	2420	2200	74	IP44	F

**Indication dimensions RDC**

	A	B	C	D	E	F	G
150	125	310	245	125	220	386	20
200	145	310	245	125	230	386	20
250	165	310	245	125	240	430	20
315	180	410	330	140	260	542	20



**Indication dimensions RDC II**

	A	B	C	D	E	F	G	H
200	158	198	245	300	25	115	345	385
250	175	248	245	300	25	120	365	430
315	190	314	400	400	30	135	410	540

